



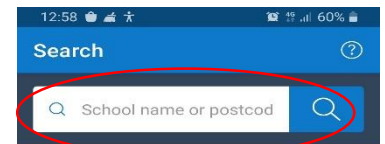
Instructions for Show My Homework



Please see below a step by step guide on how to set up Show my Homework either by computer/Laptop/Tablet/Mobile Phone.

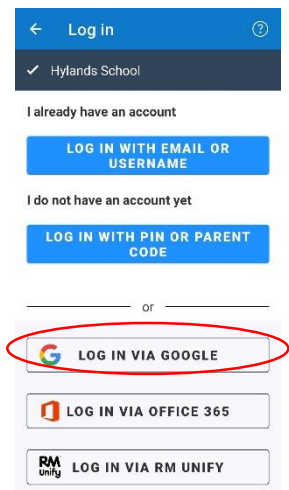
Tablet/Mobile Phone Access:

1. Download the App via App Store (Apple) or Google Play (Android)
2. Please type in the Hylands School in the box shown below and then select Hylands School CM1 3ET

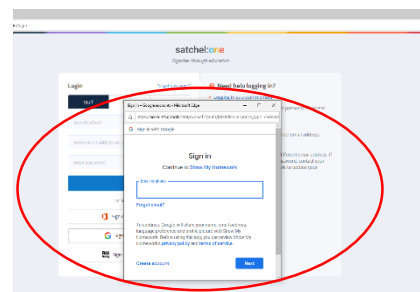


Hint: if you can't find your school by name, try searching for its postcode.

3. At the bottom of the same screen click on the Log in via Google shown below



4. Please enter you student email address and click next. Email address formatted as yeargroupstartedinitialsurname@hylands-tkat.org
Year 7 = 20 e.g. 20smithj@stumail.hylands-tkat.org
Year 8 = 19
Year 9 = 18
Year 10 = 17
Year 11 = 16
Year 12 = 15
Year 13 = 14

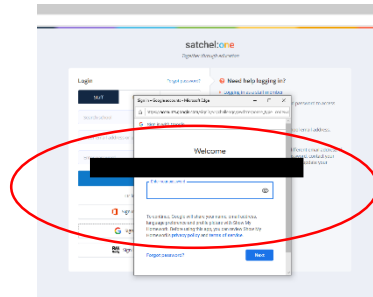




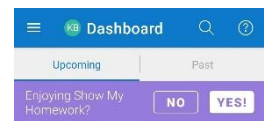
Instructions for Show My Homework



5. Enter the password which has been reset as **Hylands19** and click sign in.



6. Now you will see all the homework set.



To access via a computer / Laptop go to <https://hylands.satchelone.com/school/home> and follow the above steps 2 – 7.